



HENRY COUNTY TRANSIT MASTER PLAN FACT SHEET

WHAT IS A TRANSIT MASTER PLAN?

A Transit Master Plan (TMP) is a comprehensive 30-year look ahead to the type of public transit system that will be required to meet mobility needs in the future. It aims to capture the current state of transit services, incorporate public input, and formalize recommendations and investment strategies to meet the needs.

HENRY COUNTY TRANSIT MASTER PLAN

Sustained population growth is shifting development patterns in Henry County from a mixture of rural and suburban to a more urban form which is putting demand on Henry County's transportation system. Prepared in partnership with the Atlanta-Region Transit Link Authority (ATL), the Henry County TMP will provide a blueprint for improved transit service that aligns with the community's broader goals and objectives. The plan will make recommendations to improve access to key activity centers, including employment centers, and connect residents with the greater Atlanta region. By taking a long-term planning approach, Henry County will be better positioned to secure and leverage future transit funding opportunities.

HOW DOES THE TMP DIFFER FROM THE COMPREHENSIVE TRANSPORTATION PLAN?

The TMP focuses on public transit modes such as demand-response (including paratransit), fixed-route local bus, commuter bus, bus rapid transit (BRT), and rail within the County, whereas the Comprehensive Transportation Plan (CTP) includes all modes of transportation including cars on highways and roadways, pedestrians and bicyclists, goods and freight movement via trucks and railroads, as well as transit. The TMP and CTP projects will be coordinated to ensure they document the same vision for transit.

TRANSIT MASTER PLAN GOALS



Stewardship

Maintain and improve short-, mid-, and long-range plans for transit infrastructure and operational improvements



Vision

Provide a 30-year vision for transit services within the County to support future growth and development



Structure

Serve as a tool to inform Henry County officials, residents, and stakeholders about future transit needs and priorities



Connectivity

Integrate projects that address mobility needs and better connectivity both inside and outside the County



Funding

Address financial considerations for transit and potential funding sources

CURRENT TRANSIT IN HENRY COUNTY



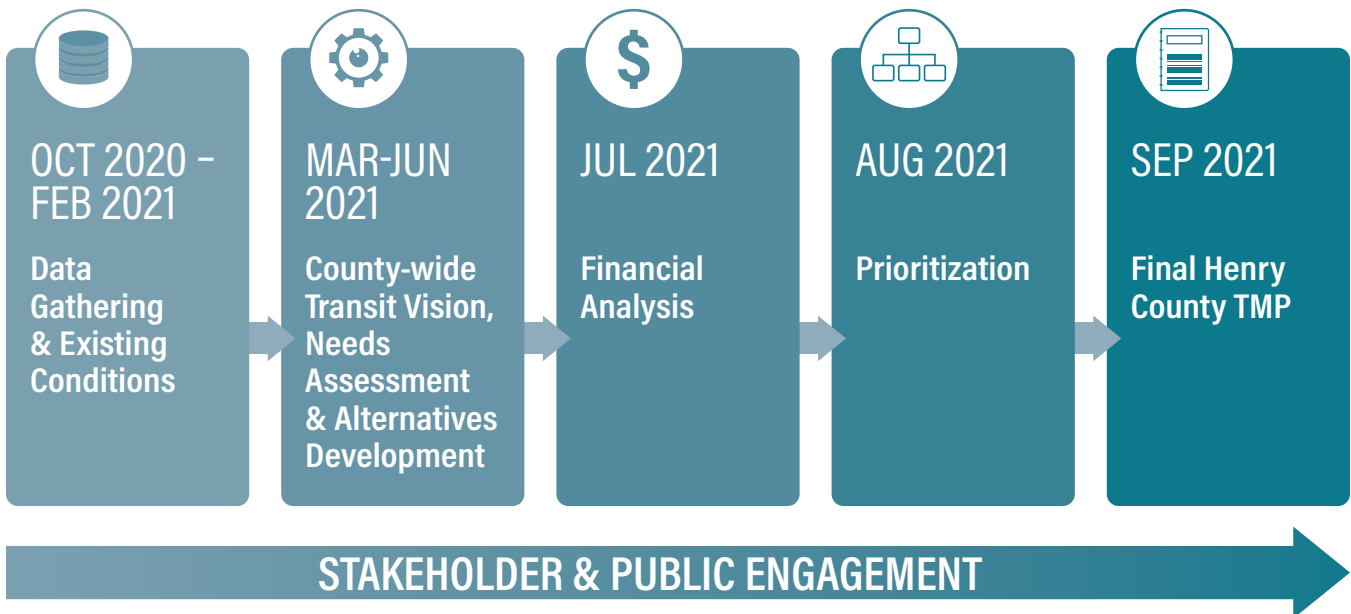
Henry County Transit offers curb-to-curb, demand response service available to all Henry County residents with no restrictions (i.e. age, disability, income, mobility).

The service runs Monday-Friday, 6 a.m. to 6 p.m. and fares are \$4 one way for riders under 60 and \$2 one way for riders aged 60 and over. More information on Henry County Transit is available at <http://www.co.henry.ga.us/Departments/S-Z/Transit-Department>.



Xpress, operated by the ATL, offers regional commuter bus service from Henry County to Downtown and Midtown Atlanta via four (4) routes serving Park & Ride locations in Stockbridge, McDonough, and Hampton. More information about Xpress is available at <https://www.xpressga.com/>.

PROJECT SCHEDULE



FOR MORE INFORMATION

- » Visit www.HenryTransitMasterPlan.com
- » Want to receive updates throughout the TMP process? Sign up on the project web page.

HOW TO GET INVOLVED

The County encourages participation from residents and community stakeholders as your input will shape the TMP's outcomes and recommendations. Four (4) public meetings will be held at project milestones to encourage open and transparent dialogue on transit in our community. Comments may also be submitted on the project website – www.HenryTransitMasterPlan.com